

Bracknell Forest Local Safeguarding Children Board
Annual Report 2008 - 09



Bracknell Forest LSCB Annual Report, 01.04.2008 - 01.04.2009

ANNEX 1

Document name & file location	Groups on 'Fs_Housing\Vol1' Users (G:)CPT\LSCB\Annual Reports		
Document Author	Chris Mills LSCB Business Manager Time Square, Market Street, Bracknell, Berkshire RG12 1JD Telephone: 01344 351767 Email: chris.mills@bracknell-forest.gov.uk		
Document Owner	Director of Social Care and Learning, Bracknell Forest Borough Council Chair of Bracknell Forest Local Safeguarding Children Board (LSCB) Seymour House Bracknell, Berkshire RG12 1AU		
Review date	This document is to be reviewed annually		
Accessibility	This document can be made available in hard and electronic formats. No copies in other languages are currently available.		
Version	Detail of change	Name & Date	
How this document was created	Version 1	Author/Line Manager	Chris Mills/Penny Reuter May 2009
	Version 2	LSCB Executive	11 June 2009
	Version 3	LSCB	3 July 2009
	Version 4	Public document or Pre-print Design Circulation	
Circulation restrictions	Public Policy Document at Version 4.0		

Accessibility

This document can be made available in large print, Braille, audio or in electronic format.

Copies in alternative languages may also be obtained.

Please contact:

The LSCB Business Manager
Time Square
Market Street
Bracknell
Berkshire RG12 1JD

Email: childrens.services@bracknell-forest.gov.uk

Telephone: 01344 351582

Fax: 01344 351521

Table of Contents

1	Introduction	6
2	The LSCB.....	6
2.1	Background.....	6
2.2	Governance	6
3	Achievements in 2008/09	7
3.1	The Safeguarding Toolkit and Section 11 Audit	7
3.2	Raising Awareness Sub Group	8
3.3	LSCB Webpages	9
3.4	LSCB Conference	9
3.5	Safeguarding Training.....	9
3.6	Ensuring Effective Safeguarding Arrangements.....	10
3.7	Safe Workforce Practice	10
3.8	Missing Children	10
3.9	Substance Misuse Protocol.....	11
3.10	Child Death Review Group.....	11
3.11	Private Fostering.....	11
3.12	Licensing and Gambling.....	12
3.13	Links to other 'Themed Partnerships'	12
4	Performance Report	13
4.1	Child Protection Monitoring	13
4.2	Additional Information	15
4.3	National Indicators	16
4.4	Public Service Agreement (PSA) 13.....	16
4.5	Multi-Agency Performance Management	17
5	LSCB Sub Groups.....	17
5.1	The LSCB Executive Committee.....	17
5.2	Serious Case Review Group.....	18
5.3	Quality Standards and Case Review Group.....	18
5.4	Policy and Procedure.....	18
5.5	Training.....	18
5.6	Anti-Bullying Group	18
5.7	Raising Awareness	18

Bracknell Forest LSCB Annual Report, 01.04.2008 - 01.04.2009

5.8	E-Safety Group	19
5.9	Child Death Overview Panel	19
6	Future Priorities	19
6.1	LSCB Business Plan	19
6.2	Business Planning Priorities 2008 -10.....	19
6.3	LSCB Business Plan Review	20
7	Appendix: LSCB Financial Summary at 1 April 2009	21

1 Introduction

This has been a productive third year for the Local Safeguarding Children Board (LSCB). The annual report can again point to clear achievements in raising awareness of child safeguarding in Bracknell Forest and in supporting member agencies to drive forward improvements in child safeguarding.

2 The LSCB

2.1 Background

The LSCB was established in April 2006 in accordance with the regulatory requirements and is currently chaired by the Director of Children's Services. Representation on the LSCB brings together a wide range of people working in child welfare, including senior officers from the local police, medical, probation, education and children's social care services and representatives from the voluntary sector. The LSCB partnership agreement¹ commits member agencies to the safeguarding standards required by the LSCB.

The LSCB partnership agreement includes a commitment to:

- Membership of the LSCB at a level that can agree the necessary resources for its operation,
- Ensuring staff competence and robust, safe, recruitment,
- Delivering appropriate training and support of staff in relation to safeguarding practice,
- Ensuring clarity of accountability for the welfare of those children affected by the work of the agency concerned,
- Ensuring adherence and commitment to standards of equality, opportunity and diversity,
- Effective information sharing about children at risk,
- The use of clear written procedures for responding to allegations against staff,
- Providing performance management information for analysis by the partnership.

The LSCB is continually proactive in raising awareness of child safeguarding across partner organisations and the public, and engaging all partner agencies in the active development of safeguarding strategies.

2.2 Governance

Following the government's response to the report by Lord Laming in the wake of the Baby Peter tragedy in Haringey, all LSCBs will need to review their governance and membership arrangements.

When new regulations are published, the Chief Executive and the Leader of the Council will need to satisfy themselves that the quality of local partnership and child safeguarding arrangements are sound. The LSCB will be required to publish an annual report on the effectiveness of safeguarding arrangements locally, and the contribution and activities of each local partner, for keeping children safe. Boards will also need to provide for lay representation and involvement from the Lead Council Member for Children and Young People. It is also expected that all LSCBs will now take steps to appoint an Independent Chair.

¹ See <http://www.bracknell-forest.gov.uk/local-safeguarding-children-board-partnership-agreement.pdf>

Within Bracknell Forest we have recently reviewed the governance and effectiveness of the LSCB. The Bracknell Forest LSCB will now begin work to:

- Progress the appointment of an Independent Chair during the remainder of 2009,
- Prepare for making the relevant adjustments to membership when new regulations are published,
- Consult with the Chief Executive and Leader of the Council regarding the new government requirements,
- Review and develop links between LSCB and Children's Trust and develop the framework for the LSCB's annual report to the Trust on the effectiveness of local safeguarding arrangements,
- Give much greater consideration to the views of service users in shaping services.

3 Achievements in 2008/09

3.1 The Safeguarding Toolkit and Section 11 Audit

The Safeguarding Toolkit, originally published online, was improved, updated and launched on 26 February 09 at a major stakeholder event at Easthampstead Park Conference Centre, Bracknell, with 200 organisations attending the presentations and group discussion. The Toolkit clearly and simply identifies every organisation's responsibilities for safeguarding children/young people, providing tools and exemplar policy and guidance to support organisations to meet their child safeguarding responsibilities.

Working through the Safeguarding Toolkit enables all organisations to complete a full Section 11 self-assessment as part of the Berkshire wide Section 11 Audit. This Audit is being undertaken to enable organisations working with children and young people to assess their degree of compliance with the standards required by Section 11 of the Children Act 2004.

Section 11 of the Children Act 2004 places a statutory duty 'on key persons and bodies to make arrangements to ensure that in discharging their functions, they have regard to the need to safeguard and promote the welfare of children'. Every Agency working with children, young people or families is required to fulfil eight key standards:

- Senior management commitment to the importance of safeguarding and promoting children's welfare,
- A clear statement of the agency's responsibilities towards children available for all staff,
- A clear line of accountability within the organisation for work on safeguarding and promoting the welfare of children,
- Service development that takes account of the need to safeguard and promote welfare and is informed, where appropriate, by the views of children and families,
- Staff training on safeguarding and promoting the welfare of children for all staff working with or (depending on the agency's primary functions) in contact with children and families,
- Safe recruitment procedures in place,
- Effective inter-agency working to safeguard and promote the welfare of children,
- Effective information sharing.

Self assessments of all LSCB statutory partner agencies have now all been completed for Phase One of the Section 11 Audit, and action plans have been developed across Berkshire. The statutory partners audited in Phase One were: Thames Valley Police, all Berkshire Local Authorities, Provider and Commissioning Health Trusts, Broadmoor Secure Hospital, Strategic Health Authority, Probation, Connexions Berkshire, the Youth Offending Service and CAF/CASS. The responsibility for undertaking this work was shared between the six Berkshire LSCBs.

Schools are self assessing between March and May 2009 (Phase Two) and the results of those self assessments are being analysed during June and July 2009.

The remaining organisations providing services to children will self assess at the end of 2009 (Phase Three). These organisations include early years providers and voluntary and community organisations providing leisure and out of school hours activities for children and young people.

3.2 Raising Awareness Sub Group

The Raising Awareness sub group of the LSCB, established in October 2008, has continued to successfully promote the safeguarding agenda.

The sub group also now publishes a regular LSCB newsletter which has provided further information on the Safeguarding Toolkit and the Section 11 Audit, and has included articles topics such as E-safety, anti-bullying and child employment.

The group has arranged the publication, launch, marketing and distribution of the Safeguarding Toolkit to all organisations involved in the Section 11 Audit.

The group has also arranged for the publication and distribution of the Safeguarding Cue Cards to professionals and adults in contact with children and young people, and also to children and young people themselves, to provide guidance on how to seek help and support when a safeguarding issue arises, for instance when:

- A child or young person may be at risk of harm or neglect,
- An allegation is made about a professional or a volunteer,
- There is a need to share personal information in an emergency in order to safeguard a child or young person,
- A child or young person has multiple problems and is in need of support from a number of agencies.

The Safeguarding CueCard has been identified as an example of regional good practice by Government Office South East (GOSE).

The Sub Group has also published and printed a Cue Card for young people to enable them to seek help from appropriate sources when they are in need of help and advice.

The Raising Awareness Sub Group has also led the development of the 2009 LSCB Annual Conference which will be held on 4 June 2009.

3.3 LSCB Webpages²

The LSCB webpages have continued to develop during 2008/09. The webpages provide important additional information and advice for children and young people, their families and those who work with them. This includes:

- Information for Parents and Carers about Child protection services,
- Information on Bullying and where to get help,
- Information on Training and Development for all those who come into contact with children and their families in their everyday work,
- A Safe Parenting guide, which provides advice on a wide range of child care and protection issues,
- Information about the Child Exploitation and Online Protection Agency,
- Links to relevant Policies and Procedures.

3.4 LSCB Conference

In June 2008 the LSCB brought together all local child care agencies for the annual local multi-disciplinary conference, which focused on 'How Adult and Children's Services work together to safeguard children'.

Representatives attended from Health, Education, Police, Probation, Adult Services, Children's Social Care and Voluntary, Community and Faith Agencies in the Bracknell Forest area. All Bracknell Forest professionals and volunteers who have contact with children and young people or who work with adults caring for children, where there may be concerns about the child's welfare, were invited to attend.

Keynote items included an introduction to 'Solution Focused Assessment', a recently developed approach to assessing and supporting families. The Signs of Safety approach now being piloted in Child Protection Case Conferences in Bracknell Forest was developed by bringing the principles and practices of 'Solution Focused Assessment'. There was a national policy overview from the Deputy Director of the Safeguarding Group at the Department for Children, Schools and Families (DCSF), Andy Hurdle, and the Regional Children's Services Adviser, Richard Balfe.

There was also an interesting range of Adult and Children's Services workshops. The Conference provided designated inter-agency refresher training for Child Protection at Levels 1 and 2.

Local conferences have helped immensely in raising awareness of the role of the LSCB and its work and will continue to be an important annual event.

3.5 Safeguarding Training

Implementation of the LSCB multi-agency training strategy, approved by the Board in December 2006, is managed by the East Berkshire Training Sub Group, which reports to the three LSCBs in that area. Details of training courses are posted on the LSCB webpage in the Training Calendar for 2009/10. During 2009/10 a training needs analysis has been commissioned to enable the Sub Group to target gaps in safeguarding training. Work has

² See: <http://www.bracknell-forest.gov.uk/living/liv-children-and-families/liv-local-safeguarding-children-board.htm>

also been taken forward to address the need for safeguarding awareness training to improve the awareness and understanding of child safeguarding amongst staff working outside of the child care services but whose employment brings them into regular contact with children, e.g., leisure centre employees.

The aims of multi-agency training are:

- To ensure good quality consistent training to an agreed standard that fulfils national requirements for child protection training,
- To ensure all training complies with the principles of the Children Acts 1989 and 2004, the Human Rights Act 1998 and all other legislation relevant to child protection,
- To ensure all training is congruent with the principles underpinning “Every Child Matters”, “Working Together to Safeguard Children” and the “Framework for the Assessment of Children in Need and their Families”, and any associated guidance.
- To ensure that all multi-agency training will promote inter-agency collaboration and partnerships to support and protect children and vulnerable young people who may be at risk of harm.
- To ensure equal opportunities are incorporated into all training and to ensure it is accessible and relevant to all people regardless of race, ethnicity, culture, faith, gender, sexuality, age, disability, and health.
- To ensure equality and respect for diversity will be promoted in all training methods and training materials.

3.6 Ensuring Effective Safeguarding Arrangements

Following the report on the Baby Peter tragedy in Haringey the local authority, police and health services have reviewed their child safeguarding arrangements with regard to staffing, child protection practice, workforce development, policy and procedure, management and governance. These action plans have been reviewed and approved by the LSCB Executive. There is now further work to do in response to the Laming Report and the government action plan.

3.7 Safe Workforce Practice

Following the safer workforce analysis completed across LSCB member agencies in 2007/08, safe workforce action plans have now been completed by all member agencies. Between April 2008 and March 2009 the Local Authority Designated Officer (LADO), who is responsible for co-ordinating advice and information with regard to allegations against staff, again received a low number of referrals from local agencies as in 2007/08. However, that is consistent with experience in the rest of the region.

3.8 Missing Children

Together with the other eight LSCBs in the Thames Valley Region, the Bracknell Forest LSCB has supported the development and approval of a Thames Valley wide protocol between local authority Children’s Services and the Thames Valley Police.

As part of new performance management arrangements in this area of work the LSCB is now responsible for the completion and approval of a quarterly return to government to report on the new National Indicator N71, which provides a self assessment on the extent to which local Children’s Services and Police are collecting, sharing and analysing information

regarding children who are reported missing, and establishing effective joint protocols and service delivery arrangements.

Within Bracknell Forest the local authority is working closely with Thames Valley Police to examine ways of developing further the assessment and tracking of individual cases, the monitoring of trends and the introduction of more preventive strategies in collaboration with other agencies involved with the young people concerned.

3.9 Substance Misuse Protocol

A revised protocol to guide multi-agency action in safeguarding children and young people from impact of substance abuse by their parents, carers and other household members has been endorsed by the LSCB and is now published on the LSCB website.

3.10 Child Death Review Group

The statutory requirement for arrangements to be in place by April 2008 to ensure that there is an overview of all child deaths has been met through the work of the Berkshire-wide Child Death Overview Panel. The LSCB is now receiving an annual data return regarding the number of preventable and non-preventable child deaths, which is reported to the Department of Children, Schools and Families, as is now required by regulation.

3.11 Private Fostering

Since June 2006 Bracknell Forest LSCB has received annual reports on private fostering setting out the numbers of privately fostered children notified to the authority and other actions taken to raise awareness. The information from the local authority's annual returns to government record very small numbers of children being fostered privately in Bracknell Forest. The numbers are as follows:

Category	2005-06	2006-07	2007-08	2008-09
<i>New notifications received during the year</i>	3	0	7	2
<i>Number of arrangements that ended during the year</i>	4	1	4	3
<i>Number of children privately fostered at year end</i>	1	0	4	4

All cases newly notified were visited as required by the regulations. In 2008 those visits were within 7 days, although this timescale was not achieved in 2006.

Actions taken to raise awareness have been as follows:

- There is information and guidance on the Bracknell Forest Borough Council public website at www.bracknell-forest.gov.uk/privatefostering

- Publication (September 2007) and distribution of a local authority information leaflet, which sets out the key responsibilities and actions for the Council, other agencies and the public, including the legal definition of privately fostered children/young people, the procedure for notifying, the benefits of notification and consequences of non-notification.
- Article in 'Town & Country' (2007), the Council's newspaper for residents, written and edited by the communications and marketing team.
- An advertisement in the Bracknell Forest 'Community Safety Booklet 2007/08', delivered to 40,000 households in Bracknell Forest.
- Advertisement in the newsletter of the Bracknell Forest Voluntary Association (2008).
- Meetings with key staff in local schools and GP surgeries to distribute the leaflet and explain the legal requirements,
- Training within Children's Social Care has taken place.
- Presentations have been made to Education (designated teachers; SENCOs; school admission team; Head of EWOs); Practice Managers for GP services; Faith communities. Information has been sent to a wide range of agencies, including hospitals which serve the Bracknell Forest area.
- Publicity and information sessions are ongoing.
- The specialist worker attends the South East regional meetings and pan Berkshire meetings of specialist workers to update and monitor practice.

Private Fostering Arrangements in Bracknell Forest were inspected by Ofsted in March 2009 and rated as 'good'. The inspector found that there are clear and comprehensive procedures for the notification, assessment, support and monitoring of private fostering arrangements and that private foster carers and young people receive good levels of support.

3.12 Licensing and Gambling

In February 2009 the LSCB received the annual report from Thames Valley Police on their actions on behalf of the LSCB to ensure the suitability of licensed premises with regard to the safeguarding of children and young people. On a small number of occasions legal action has been required to prevent under age sales. Through the 'Pubwatch' scheme, licensees have asked to feed back to the Police any information which could be of use in reducing under age sales and the Community Safety Sergeant and the Licensing Officer have targeted a section of licensed establishments for unannounced inspection checks in addition to regular licensing inspections. High risk premises will continue to receive an irregular pattern of visits, which are designed to ensure that all licensees and staff understand the expectations of responsible licensing. The LSCB endorsed the various actions taken.

3.13 Links to other 'Themed Partnerships'

There is an ongoing dialogue between the LSCB, Crime Disorder Reduction Partnership (CDRP) and Bracknell Forest Children and Young People's Trust. As a key partner, the LSCB makes a contribution to the quarterly Themed Partnership Update which is circulated to the three partnership boards. The LSCB makes a key contribution to the delivery of the 'Stay Safe' objectives of the Children and Young People's Plan.

4 Performance Report

4.1 Child Protection Monitoring

Child Protection performance and monitoring reports are presented at every LSCB meeting for consideration and debate by members. These reports include monitoring information in the following categories:

1) *The number of children who have been the subject of child protection investigations.*

During 2008/09 this was as follows:

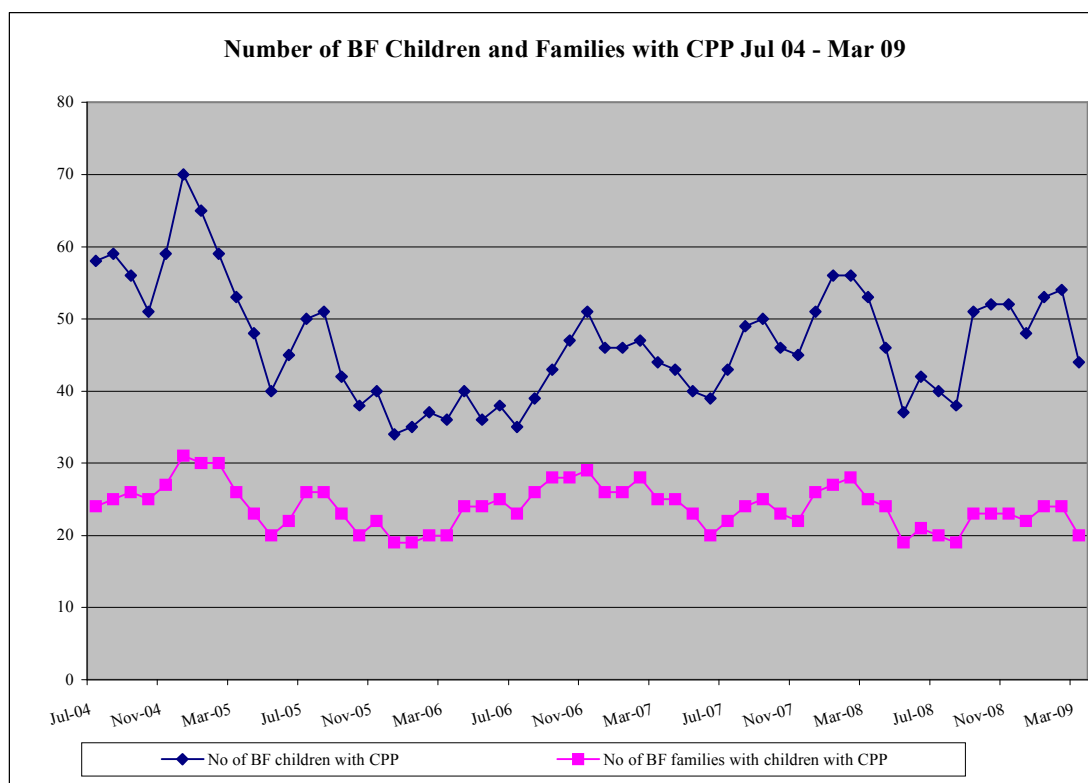
Apr 08	May 08	Jun 08	Jul 08	Aug 08	Sep 08	Oct 08	Nov 08	Dec 08	Jan 09	Feb 09	Mar 09
9	12	14	12	14	12	19	17	25	20	13	18

2) *The numbers of children in Bracknell Forest with Child Protection Plans.*

During 2008/09 this was as follows:

Apr 08	May 08	Jun 08	Jul 08	Aug 08	Sep 08	Oct 08	Nov 08	Dec 08	Jan 09	Feb 09	Mar 09
46	37	42	40	38	51	52	52	48	53	54	44

In comparison with the overall number of children subject to a Child Protection Plan across 2007/08 there has been a year on year decrease of 17.3% per 10,000 of the population aged under 18. The graph below shows a five year comparison of the number of children and families with Child Protection plans:



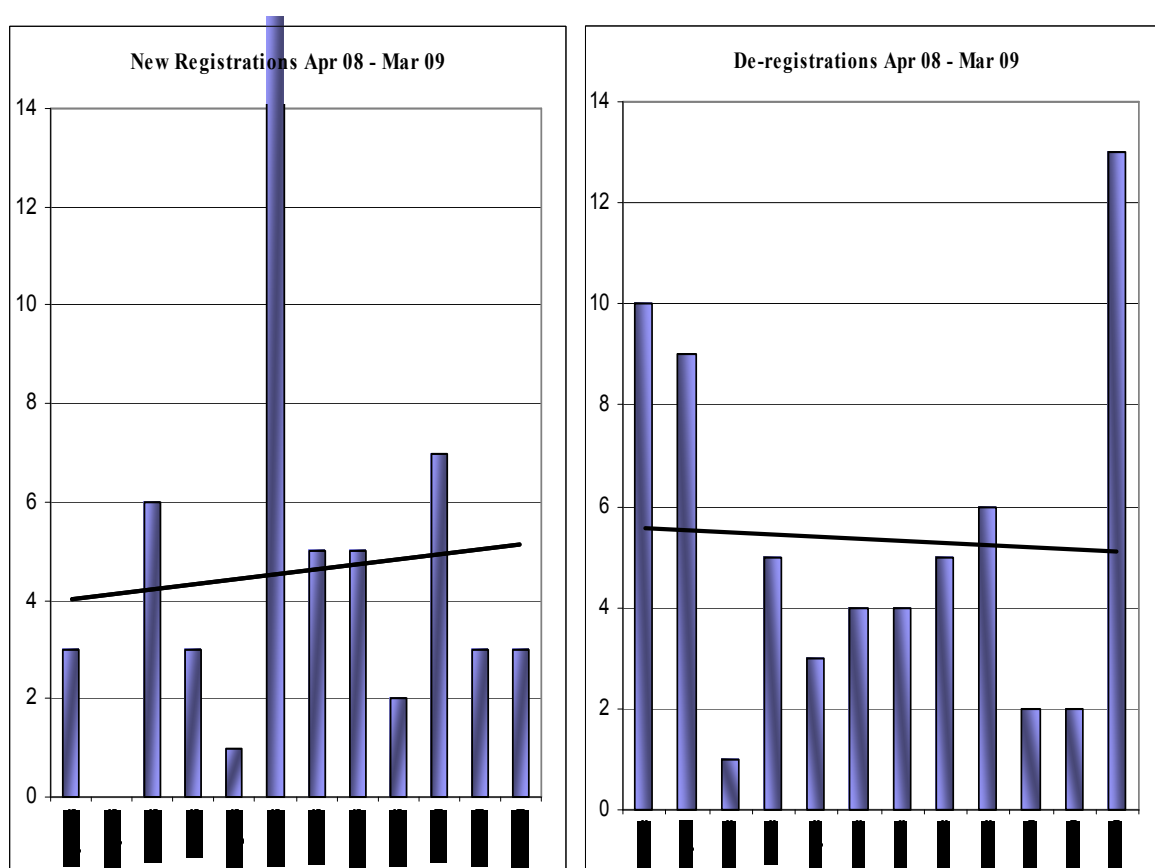
At 31 March 2008 the statistical neighbours for Bracknell Forest show a figure of 18.3 per 10,000 population U-18 as subject to Child Protection Plan. The Bracknell Forest figure was 19.7, compared to 16.3 at 31 March 2009.

3) *The numbers of registrations/de-registrations of children with Protection Plans.*

During 2008/09 this was as follows:

	Apr 08	May 08	Jun 08	Jul 08	Aug 08	Sept 08	Oct 08	Nov 08	Dec 08	Jan 09	Feb 09	Mar 09
Registrations	3	0	6	3	1	17	5	5	4	7	3	3
De-registrations	10	9	1	5	3	4	4	5	6	2	2	13

The number of registrations has increased over the last twelve months, particularly as a result of the high number of registrations in September, with the number of de-registrations decreasing over the same period. See charts below.

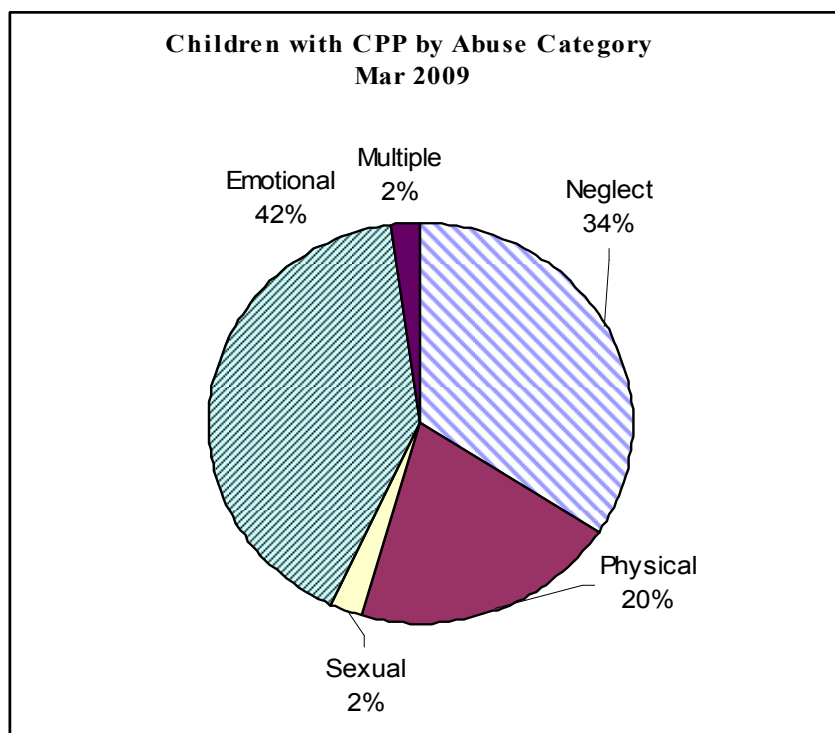


At 31 March 2008, the rate of Child Protection registrations per 10,000 population aged under 18 was 22.6 for Bracknell Forest and 21.4 for Statistical Neighbours. The rate of de-registrations from the Child Protection Register per 10,000 population aged under 18 was 19.3 for BF and 19.5 for Statistical Neighbours.

At 31 March 2009 the rate of registration in Bracknell Forest was 20.4, and the rate of de-registration was 23.7.

4) *The numbers of Children with Protection Plans by abuse category.*

At 31 March 2009, this was as follows:



Nationally at 31 March 2008, Neglect is the most common category used 46%; Emotional abuse 27%; Physical Abuse 12%; Sexual 7%; Multiple 9%.

In Bracknell Forest at 31 March 2009, the majority of children have been registered under the category of Emotional Abuse (42%) followed by Neglect (34%). The two categories combined account for 75% of children with a Child Protection Plan. It should be noted that the category of registration is not necessarily the only one identified; it is the most predominant.

For all the above data comparative figures for other local authorities are not yet available for the year ending March 2009.

4.2 Additional Information

The LSCB also receive a report from the Independent Child Protection Conference Chair on prevailing trends and any particular practice issues which the board need to note. During 2008/09 the level of family participation in Child Protection case Conferences has remained high, with parents attending 92% of all conferences held.

Information from the Child Protection Conference audit, started in January 2009, shows that from the 7 initial conferences held up until 31 March 2009, the highest parental concern indicator was domestic abuse (in 57% of the initial conferences a parent had been a victim of domestic abuse; in 29% a parent has been a perpetrator). Mental health problems were present in 29% of initial conferences and in 14% of initial conferences alcohol was present and drug misuse present in a further 14% of initial conferences.

4.3 National Indicators

Performance in relation to National Indicators in Bracknell Forest was assessed as follows:

Child Protection

- NI 65: The percentage of those children who are assessed as requiring a Child Protection Plan who have previously been subject to one, expressed as a percentage of the total number of children subject to Child Protection Plans. The figure for Bracknell Forest in 2007/08 was 8.2%, and this has increased to 10.9% in 2008/09. The target for 2009/10 is 10%, which would be in line with the England average. The figure for statistical neighbours in 2006/07 (the most recent available) was 15.7%.
- NI 67: the percentage of child protection cases reviewed within the statutory timescales. In Bracknell Forest in 2007/08 all cases were reviewed on time, and this has continued to be the case during 2008/09. The figure for statistical neighbours in 2006/07 (the most recent available) was 99.6%.
- NI 64: the percentage of children who were assessed as no longer needing a Child Protection Plan, who have continuously been the subject of a Child Protection Plan for two years or more, expressed as a percentage of the total number of children ceasing to be the subject of a Child Protection Plan. In Bracknell Forest in 2007/08 the outcome for this target was 1.9%, and the figure for 2008/09 is 1.6%. The figure for statistical neighbours in 2006/07 (the most recent available) was 5.8%. At 31 March 2009 there were no children in Bracknell Forest who had been subject to a Child Protection Plan for longer than 14 months.

Initial and Core Assessments

- NI 68: the percentage of referrals to Children's Social Care that go on to receive an initial assessment. The figure for Bracknell Forest for 2008/09 is 61.8%. Comparative figures for 2007/08 show a figure for Bracknell Forest of 54.4%, 61.6% for statistical neighbours and a national figure of 59.4%.
- NI 59: the percentage of initial assessments for Children's Social Care carried out within 7 working days of referral. The figure for Bracknell Forest for 2008/09 is 70%. Comparative figures for 2007/08 show a figure for Bracknell Forest of 75.9%, 66.5 for statistical neighbours and a national figure of 70.7%.
- NI 60: the percentage of core assessments for Children's Social Care that were carried out within 35 working days of their commencement. The figure for Bracknell Forest for 2008/09 is 83.8%. Comparative figures for 2007/08 show a figure for Bracknell Forest of 54.4%, 61.6% for statistical neighbours and a national figure of 59.4%.

Comparative figures for other local authorities are not yet available for the year ending March 2009.

4.4 Public Service Agreement (PSA) 13

The four indicators underpinning this PSA, published in April 2008, represent the breadth of the issues that are being addressed to improve the safety of children and young people.

Progress against them will illustrate the extent to which the policies and governance structures in place have resulted in change for children, young people and families. It has therefore been agreed by the statutory partners of the LSCB that the LSCB will consider the data collected against these particular targets.

The four indicators, together with results from the most recent data collected, are as follows:

1) Indicator (NI 169): The percentage of children who have experienced bullying, as collected via the 'Tell Us' survey. Result: 52.6% Of Children have experienced bullying in Bracknell Forest. Figure from the Tellus3 survey 2008, published in DCSF Statistical Release Jan 2009. The overall figure for local authorities in the South East region was 50.4³.

2) The percentage of children referred to Children's Social Care who received an initial assessment within seven working days (NI 59). Result: The figure for Bracknell Forest for 2008/09 is 70%. Comparative figures for 2007/08 show a figure for Bracknell Forest of 75.9%, 66.5 for statistical neighbours and a national figure of 70.7%. (See also above.)

3) The number of preventable child deaths, as recorded through the child death review process. Result: The figure reported to the DCSF by the Child Death Overview Panel (CDOP) for Bracknell Forest for 2008/09 is 0.

Overall two child deaths were reviewed by CDOP as to whether or not they were preventable⁴.

4) The number of emergency hospital admissions caused by unintentional and deliberate injuries to children (NI 70). For 2008/09 the Berkshire NHS Public Health Network have reviewed the use of this indicator in May 2009 and have recommended a more in-depth analysis over a wider area. The detailed data is not published and there are no firm findings at present.

4.5 Multi-Agency Performance Management

The Bracknell Forest LSCB has continued to lead work across Berkshire in collaboration with the LSCBs in all six of the unitary authorities to implement the agreed common dataset for all the key safeguarding agencies, which is being used from 2008/09 to record safeguarding performance across those different services against a range of benchmarking data. It is expected that the first full data reports will be available in September 2009.

5 LSCB Sub Groups

The terms of reference for the sub groups were updated in November 2008 and the Chairs of all LSCB sub groups are now Board members. Details of the LSCB sub groups currently established and their key tasks are as follows:

5.1 The LSCB Executive Committee

- Planning agenda for Board meetings,
- Preparation of Annual LSCB Business Plan,
- Management of pooled LSCB funds and provision of financial reports to LSCB,

³ See: <http://www.dcsf.gov.uk/rsgateway/DB/STR/d000828/TellusNIStatsRelease-FINAL090108.pdf>

⁴ Not all deaths have been considered, for example if they are still with the Coroner, or are cases of prematurity earlier than 24 weeks. The figure represents 'Of those deaths that have been considered by the Panel, how many were considered preventable?'

- Co-ordination of Serious Case Review Group,
- Taking strategic decisions,
- Discussing agencies about whom there are safeguarding concerns.

5.2 Serious Case Review Group

- Will be convened by LSCB Chair and Executive, and will undertake serious case reviews in accordance with the guidance in Working Together. It was not necessary to convene the Serious Case Review Group during 2008/09.

5.3 Quality Standards and Case Review Group

- Case monitoring and case study,
- Development of multi-agency performance reporting,
- Reports to the main board on a six monthly basis,
- Overseeing and co-ordinating a Section 11 Audit.

In 2008-09 the group has continued its work to support proposals for monitoring multi-agency performance.

5.4 Policy and Procedure

- This is a Berkshire wide group which reviews the scope and quality of those policies and procedures for which the LSCB has a responsibility,
- Reports annually to the main board.

The role of the group has changed following the completion of its work in developing the new Berkshire Child Protection Procedures in September 2006 and work is now centred on the introduction and ongoing review of more user friendly web based procedures.

5.5 Training

This is a Berkshire East sub-group (Slough, Royal Borough of Windsor and Maidenhead and Bracknell Forest).

- To implement the training strategy,
- To identify gaps of knowledge in each agency and devise plans to fill those gaps by recommending training, single-agency or multi-agency, to keep abreast of current developments in Child Protection,
- Reports annually to the main board.

5.6 Anti-Bullying Group

- The group was established to work towards understanding and reducing bullying amongst all children and young people in the community of Bracknell Forest.
- Bullying is defined as: 'Deliberate hurtful behaviour repeated over a period of time and in circumstances where it is difficult for those being bullied to defend themselves'.
- Reports annually to the main board.

5.7 Raising Awareness

The Raising Awareness sub group of the LSCB was established in October 2008. The group is tasked with promoting the safeguarding agenda more widely and increasing the Partnership's dialogue with children, young people and parents/carers, as well as the range of professionals and volunteers the LSCB wishes to engage with. The group reports annually to the main board.

5.8 E-Safety Group

This is a new group, established in December 2008.

- To ensure that all children, young people and parents/carers are equipped with the knowledge and skills to safeguard themselves online
- To ensure that all people who work with children and young people have access to good quality procedures and effective training to safeguard those at risk through online activity
- To ensure that systems and services are in place to identify, intervene and divert people from sexually exploiting or abusing children and young people online and offline
- To ensure that all children and young people who have been the subject of indecent images and sexual exploitation are identified, protected and given an appropriate level of support.

The group reports annually to the main board.

5.9 Child Death Overview Panel

The Child Death Overview Panel was established April 2008 on a pan-Berkshire basis to ensure that there is an overview of all child deaths, as required by Working Together, April 2006.

The Panel reports annually to the main board.

6 Future Priorities

6.1 LSCB Business Plan

The 2008-10 LSCB Business Plan provides LSCB members and other interested parties with an overview of the aims and future work of the LSCB. The Plan is a working document which has been fully updated in consultation with all member agencies. The Plan is published on the LSCB webpage. The Business Planning Priorities are set out below:

6.2 Business Planning Priorities 2008 -10

The priorities for 2008-10 were developed in full consultation with LSCB members and wider Partners over a series of meetings during the autumn of 2007 and spring 2008.

- Leading scrutiny and challenge of Safeguarding practice in Bracknell Forest,
- Working more closely with the Children's Trust and CDRP, with particular focus on common priorities
- Reducing bullying,
- Introducing new processes for responding to child deaths,
- Raising Safeguarding Awareness, including developing a Communications Strategy and developing a 'Safeguarding Toolkit' to help all Partner agencies meet their Safeguarding responsibilities,
- Ensuring that all settings and agencies have a Safeguarding Policy for all their core business,
- Completing a Section 11 audit with all Partner Agencies working with children, to establish to what extent we are meeting our Safeguarding responsibilities,
- Contributing to the continuing update of the 2006 Child Protection Procedures and updating additional local Procedures,

- Developing a multi-agency process for collecting and analysing data, to assess the collective safeguarding performance of the LSCB Partner Agencies and the Board's progress in improving outcomes for children and young people ,
- Evidencing a clear prioritisation, of Child Protection and Safeguarding processes in all services in contact with children and young people (the 'Golden Thread of Safeguarding'),
- Supporting the establishment of seamless thresholds and consistent application of these by all services,
- Involving service users in the design and development of services,
- Reviewing and maintaining progress in safer workforce practice,
- Updating Safeguarding training (including introducing Safer Workforce training) and reviewing the take up of training provision,
- Promoting E-Safety.

6.3 LSCB Business Plan Review

Each of these priorities has been assigned to a particular LSCB or Children's Trust sub-group to lead; each group reports regularly to the LSCB Board.

A review of progress against the LSCB Business Plan is undertaken annually and the updated action plan for 2008-10 is published on the LSCB webpage⁵.

⁵ <http://www.bracknell-forest.gov.uk/living/liv-children-and-families/liv-local-safeguarding-children-board.htm>

7 Appendix: LSCB Financial Summary at 1 April 2009

1) 2008/09: Income and Forecast Spend at 1 April 2009

Income 2008-09		Forecast Spend 2008-09	
BF Council (including Connexions)	76,500.00	Business Management costs	64,476.00
Thames Valley Police	2,000.00	Training (with income deducted)	9,000.00
		Marketing & Printing inc. Safeguarding toolkit	9,050.00
PCT	20,000.00	LSCB Stakeholder Event	3,000.00
National Probation Service	1,000.00	LSCB Conference	5,140.00
Broadmoor (WLMHT)	500.00	Room bookings & Refreshments	1,661.00
H & Wexham Acute Trust	1,000.00	Child Death Administrator	5,000.00
CAFCASS	500.00	CP Procedures	1,800.00
Carry Forward from 07/08	12,623.00		
Training income	2,345.00		
Child Death Review Grant	8,540.00		
Total Income (to date)	125,008.00	Total Forecast Spend	99,127.00
Carry Over	25,881.00		

2) 2009/10: Income and Forecast Spend at 1 April 2009

Income 2009-10		Forecast Spend 2009-10	
BF Council (including Connexions)	76,500.00	Business Management costs	71,720.00
Thames Valley Police	2,000.00	Training	10,000.00
PCT	20,000.00	09/10 Business Plan costs: Improving service user engagement, awareness raising, accident prevention.	11,500.00
		Marketing & Printing	2,201.00
National Probation Service	1,000.00	Stakeholder event (annual)	4,000.00
Broadmoor (WLMHT)	500.00	LSCB Conference (annual)	8,000.00
H & Wexham Acute Trust	1,000.00	Room bookings & Refreshments	2,000.00
CAFCASS	500.00	Child Death Administrator	5,000.00
Training income (estimate)	2,000.00	Independent Chair (budget pressure)	15,000.00
Child Death Review Grant	8,540.00	Contingency (Serious Case Review)	7,500.00
Carry Forward from 08/09	25,881.00	CP Procedures update	1,000
Total Anticipated Income	137,921.00	Total Forecast Spend	137,921.00